



*“Delivering Quality by Performance”*

## Mycoplasma Experience Product Guide – Contract Media

January 2026

**Contract Media are supplied by contractual agreement for "in-house" use only**

- |                     |         |
|---------------------|---------|
| 1. Solid Media      | page 3  |
| 2. Liquid Media     | page 5  |
| 3. Diagnostic Media | page 7  |
| 4. Organisms for QC | page 12 |



## General information

Mycoplasma Experience Contract media is research-quality isolation media supporting a wide range of species including *M. synoviae*, *M. hyopneumoniae*, *M. genitalium* and *M. hyorhinis* cultivar  $\alpha$  (formerly described as 'non-cultivable')

Suitable applications for the Mycoplasma Media include veterinary, human, clinical and cell culture.

Media can be supplied freshly prepared and ready for use or, more usually, frozen (agar supplement and liquid medium) with the agar component of solid medium stored at +4°C. Frozen media are stable for six months before preparation. Agar plates are supplied fresh or are stable for at least 30 days if stored refrigerated.

### QUALITY CONTROL

The growth-promoting properties of these media are identical to those prepared routinely for use at Mycoplasma Experience laboratories. Test validation documents are issued with every media lot.

All media are validated with stringent, low-passage strains. Examples of media validation forms are available on request and additional test strains can be specified.

### INCUBATION

Solid mycoplasma medium is validated in 95% N<sub>2</sub>/5% CO<sub>2</sub>.

Solid ureaplasma medium is validated in either 95% N<sub>2</sub>/5% CO<sub>2</sub> or CO<sub>2</sub> GasPak systems (BBL).

Mycoplasma and ureaplasma liquid media are validated in air-tight containers.

### INHIBITORS

All media contains selective agents to prevent the growth of other bacterial species. To order **without inhibitors** please specify at the time of ordering or use code **MEX** after the product code.

### RE-VALIDATION

All media can be re-validated when near the shelf-life to extend it another 6 months.



## SOLID (AGAR) MEDIA PRODUCTS

Supplied as separate frozen supplement and agar components. Shelf life: 6 months with supplement stored @ -20°C and agar at +4°C

### MS - Mycoplasma Agar & Supplement

Research quality isolation media supporting a wide range of species; validated with <100 colony forming unit inocula of:

1. For EP 2.6.7 MYCOPLASMAS  
*M. arginini*, *M. hyorhinis* cultivar  $\alpha$ , *M. orale*, *M. pneumoniae*, *M. synoviae*, *M. gallisepticum*, *A. laidlawii* and *M. fermentans*

Suitable for "Eur. Pharm: 2.6.7 MYCOPLASMAS" and all Regulatory Testing and isolation work. Other low passage organisms can be substituted/included on request, for example *Spiroplasma melliferum*.

2. For Veterinary isolation  
*M. arginini*, *M. hyorhinis* cultivar  $\alpha$ , *M. hyopneumoniae*, *M. synoviae*, *M. gallisepticum* and *A. laidlawii*

<u>Product Code</u>	<u>Volume (agar + supplement)</u>	<u>Price</u>
MS1	100 ml	£30.00
MS5	500 ml	£130.00

Minimum order: One Litre. 5% Discount for volumes of 5L and over

Please include which QC panel from option 1 or 2 (or custom choice) above you require, on your purchase order or email when ordering.



### **AS - Mycoplasma Agar & Supplement for Avian Pathogens**

The solid medium allows rapid isolation with colonies microscopically visible after incubation for only three days. Validated with *M. synoviae*, *M. gallisepticum*, *M. meleagridis* and *M. iowae*. Suitable for avian isolation work giving rapid colonial growth.

<b><u>Product Code</u></b>	<b><u>Volume (agar + supplement)</u></b>	<b><u>Price</u></b>
AS1	100 ml	£30.00
AS5	500 ml	£130.00

**Minimum order: One Litre. 5% Discount for volumes of 5 L and over**

### **US - Ureaplasma Agar & Supplement**

The solid medium allows rapid isolation of human and animal ureaplasmas with colonies microscopically visible after incubation for only 24 hours for some species. Validated with veterinary or clinical species as appropriate.

<b><u>Product Code</u></b>	<b><u>Volume (agar + supplement)</u></b>	<b><u>Price</u></b>
US1	100 ml	£30.00
US5	500 ml	£130.00

**Minimum order: One Litre. 5% Discount for volumes of 5L and over**



## LIQUID MEDIA PRODUCTS

Supplied frozen. Shelf life: 6 months at -20°C (UL) or -70°C (ML, AL)

### MLP- Mycoplasma Liquid Medium for "Eur. Pharm: 2.6.7 MYCOPLASMAS"

Validated with low passage strains of *M. pneumoniae*, *M. orale*, *M. hyorhinis* cultivar  $\alpha$ , *A. laidlawii*, *M. synoviae*, *M. gallisepticum* and *M. fermentans* at <100 colony forming units/100ml or equivalent.

<u>Product Code</u>	<u>Volume</u>	<u>Price</u>
MLP	100 ml	£26.00
MLP5	500 ml	£120.00
MLP8	800 ml	£190.00

Minimum order: Five Litres. 5% discount on volumes of 10 litres and over

### ML - Mycoplasma Liquid Medium

Same formulation as above but for non-regulatory use. Please note if *M. fermentans* QC is required, it will be added as a 100 ml test at an extra charge (see next page).

Validated with <20 colony forming units per ml of *M. arginini*, *M. hyorhinis* cultivar  $\alpha$ , *M. hyopneumoniae*, *M. orale*, *M. pneumoniae*, *M. synoviae*, *M. gallisepticum* and *A. laidlawii*.

Other low passage organisms may be substituted/included on request.

<u>Product Code</u>	<u>Volume</u>	<u>Price</u>
ML2	20 ml	£7.50
ML5	50 ml	£11.50
ML10	100 ml	£23.00
ML50	500 ml	£110.00
ML100	1000 ml (1L)	£220.00
ML200	2000 ml (2L)	£440.00



100 ml <i>M. fermentans</i> QC (inclusive for MLP)	£60.00
100 ml <i>S. melliferum</i> QC (recommended replacement for <i>S. citri</i> under new EP 2.6.7 MYCOPLASMAS)	£60.00

Minimum order: **One Litre** (NB 5% discount on volumes of 5 litres and over)

### **AL-Avian Mycoplasma Liquid Medium**

The Avian liquid medium gives an excellent colour change with *M. meleagridis*. Validated with *M. synoviae*, *M. gallisepticum*, *M. meleagridis* and *M. iowae*.

<u><b>Product Code</b></u>	<u><b>Volume</b></u>	<u><b>Price</b></u>
AL5	50 mL	£11.50
AL10	100 mL	£23.00
AL50	500 ml	£110.00

Minimum order: **One Litre** (NB 5% discount on volumes of 5 litres and over)

### **UL - Ureaplasma Liquid Medium**

Isolation media for human and animal ureaplasmas. The liquid media is diagnostic in giving a colour change from yellow to purple.

<u><b>Product Code</b></u>	<u><b>Volume</b></u>	<u><b>Price</b></u>
UL5	50mL	£11
UL10	100mL	£22.00

Minimum order: **One Litre** (NB 5% discount on volumes of 5 litres and over)

**Other volumes available upon request.**

**These products are custom made; please allow a minimum of 4 weeks for production and validation for ML and MS and 3 weeks for other media products, when ordering.**



## CONTRACT DIAGNOSTIC MEDIA

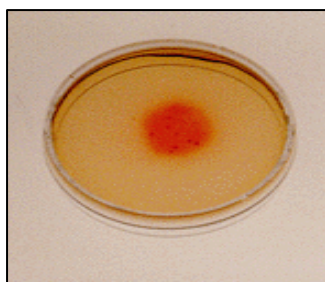
### SOLID (AGAR) MEDIA PRODUCTS

Supplied as frozen supplements with agar.

Shelf life: 6 months at -20°C/+4°C respectively

#### **M. bovis Diagnostic Medium**

A solid isolation medium for *M. bovis*. The colonies develop a red colouration in 3-7 days and, in addition, the medium is selective in suppressing many likely contaminants.



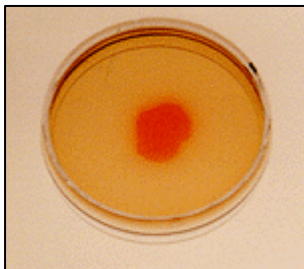
*M. bovis* 183 - macroscopic appearance after 7 days incubation on MB isolation medium.

<u>Product Code</u>	<u>Volume</u>	<u>Price</u>
MB1	100 ml	£26.00
MB5	500 ml	£120.00

Minimum order: **One Litre** (NB 5% discount on volumes of 5 litres and over)

### **M. agalactiae Diagnostic Medium**

A solid isolation medium for *M. agalactiae* which, as for *M. bovis* Diagnostic Medium above, produces red colonies in 3 - 7 days and suppresses likely contaminants.



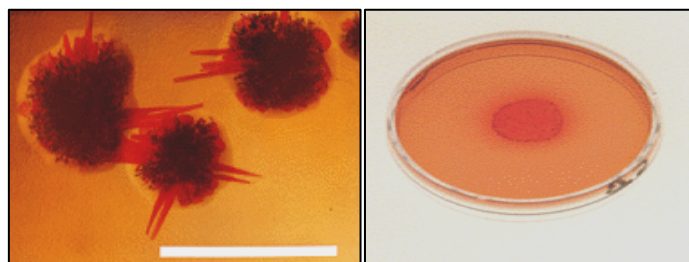
*M. agalactiae* Teramo - macroscopic appearance after 7 days incubation on MA detection medium.

<b><u>Product Code</u></b>	<b><u>Volume</u></b>	<b><u>Price</u></b>
MA1	100 ml	£26.00
MA5	500 ml	£120.00

**Minimum order: One Litre (NB 5% discount on volumes of 5 litres and over)**

### **CBPP Diagnostic Medium**

A solid isolation medium for *M. mycoides* subsp. *Mycoides* (SC) on which colonies develop a red colouration over 7 days. Not selective – some likely contaminants can develop colouration more rapidly. Incubation atmosphere: ‘Microaer’ (Biomerieux).



*M. mycoides* subsp. *mycoides* (SC) PG1 after 7 days incubation on CB isolation media. Microscopic and macroscopic appearance.

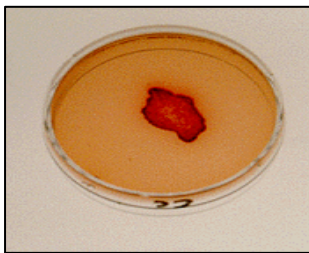


<u>Product Code</u>	<u>Volume</u>	<u>Price</u>
CB1	100 ml	£26.00
CB5	500 ml	£120.00

Minimum order: **One Litre** (NB 5% discount on volumes of 5 litres and over)

### CCPP Diagnostic Medium

A solid isolation medium for *M. capricolum* subsp. *Capripneumoniae* on which colonies develop a red colouration over 7 days. Not selective - . Some likely contaminants can develop colouration more rapidly. Incubation atmosphere: 'Anaerogen' (Oxoid)



*M. capricolum* subsp. *capripneumoniae* M74/93 after 7 days incubation on CC isolation medium.

<u>Product Code</u>	<u>Volume</u>	<u>Price</u>
CC1	100 ml	£26.00
CC5	500 ml	£120.00

Minimum order: **One Litre** (NB 5% discount on volumes of 5 litres and over)



## CONTRACT DETECTION MEDIA FOR USE WITH ANALYTICAL/CAPTURE FILTER MEMBRANES

### SOLID (AGAR) MEDIA PRODUCTS

Supplied as frozen supplements with agar. Shelf-life 12 months at -20 °C/+4 °C respectively

ALERT



*Acholeplasma laidlawii* can be part of the bioburden of broth powders, both plant and animal derived serum-free cell culture media have also become contaminated, possibly from one or more components. The source has not been established.

**\*\*\*ALL FILTER STERILISED MEDIA MAY BE AT RISK\*\*\***

Mycoplasma Experience has been involved at every step of the *Acholeplasma laidlawii* contamination story:

- Identified an isolate as *A.laidlawii* from a TSB media fill sterility trial (1993)
- Subsequently isolated *A.laidlawii* from bacteriological broth powders
- Developed testing protocols for broth solutions and cell culture media, with associated QC, for the detection of *A. laidlawii*

And now....

We have designed a RAPID, **animal-product-free** *A.laidlawii* DETECTION MEDIUM which can be used for non- destructive testing of large volume samples. AIERT24 is an isolation medium allowing the detection of viable, colony forming units of *A.laidlawii* as visible, red colonies within 24 - 48 hours.



### AIert 24

<u>Product Code</u>	<u>Volume</u>	<u>Price</u>
AIert 24-100	100 ml	£30.00
AIert 24-500	500 ml	£145.00

Minimum order: **One Litre** (NB A 5% discount applies to volumes of 5 litres and over).

### INCUBATION ATMOSPHERES

<b>MB1,</b>	- Oxoid, 'CO <sub>2</sub> GEN'
<b>MA1, CB1 &amp; CC1</b>	-Biomerieux 'GenBox Microaer'
<b>AIERT24</b>	- 95% N <sub>2</sub> / 5% CO <sub>2</sub>

**NOTE:** The technique of overlaying the membrane filter onto agar to give red colonies on the membrane can be replicated with all of our "Diagnostic agars" – for example for isolation of *M.bovis* from milk.

Standard Mycoplasma Solid (MS) can also be used. Colonies can be more easily visualised by staining with 'Dienes' stain after incubation.



## FROZEN QC CULTURES AVAILABLE IN MICROTITRE TRAYS

To enable adequate testing of Mycoplasma Experience media, microtitre trays containing 96 x 0.1 ml. Wells of Frozen QC cultures (all low-passage) are available for our media customers.

With each tray issued, a Culture Data Sheet is supplied.

<u>SPECIES</u>	<u>STRAIN</u>	<u>ORIGIN</u>	<u>PRICE (per tray)</u>
<i>M. arginini</i>	69D	Cell culture isolate	£140
<i>M. gallisepticum</i>	MEVT A70	Avian isolate	£140
<i>M. hyopneumoniae</i>	JF685	Porcine isolate	£160
<i>M. hyorhinis</i> cultivar $\alpha$	ATCC 29052	ATCC (cell culture)	£200
<i>M. hyosynoviae</i>	MEVT B55	Porcine isolate	£160
<i>M. meleagridis</i>	7672	Avian isolate	£200
<i>M. orale</i>	T24MM	Cell culture isolate	£140
<i>M. pneumoniae</i>	5167	Human isolate	£140
<i>M. fermentans</i>	28AC	Cell culture isolate	£200
<i>M. salivarium</i>	IPNH	Cell culture isolate	£160
<i>M. synoviae</i>	263	Avian isolate	£140
<i>A. laidlawii</i>	25C	Cell culture isolate	£140
<i>U. urealyticum</i>	C	Human isolate	£200
<i>S. citri</i>	SPA	Plant isolate	£250
<i>S. melliferum</i>	BL7	Cell culture isolate	£160

Other cultures can be prepared on request. Please contact us for details.

All strains are restricted to a low subculture level (a maximum of 10), or passaged in cell cultures, to avoid media adaptation. Data sheets accompanying the culture trays give the origin, subculture history, label and storage. Shipping is on solid carbon dioxide.

Please note: specialist shipping where dry ice is topped up/import permits will be required for EU nations and may be required for other countries.